

Cleadon Methodist Church

Meeting and Party Rooms for Hire



8 Sunderland Road, Cleadon Village, SR6 7UT

**For details or to book space call
07889177092**

Cleadon Methodist Church is an active Christian community church in the centre of Cleadon village. Services of worship usually take place weekly in our chapel premises which seats around 80 but removing a rear partition provides space for a further 80+ participants.

www.sunderlandmethodistcircuit.org.uk/churches/cleadon.html

Our premises are used for meetings, parties, youth groups (e.g. Brownies), drama workshops, wellness programmes, community activities such as coffee mornings, concerts, etc. and as a polling station. Weddings, christenings and funerals also take place within this beautiful part of our premises. The following pages illustrate the facilities available for hire on a one-off or regular basis.

For information about arranging a wedding, christening or funeral contact our minister, the Revd Jane Cook, on 0191 519 2350.

The Chapel



Main Hall

Located behind the Chapel is the main hall of the premises measuring about 40 feet by 30 feet (12m by 9m). The hall has a vaulted roof and, as can be seen in the photograph, there is ample room for bouncy castles and other party favourites.

Maximum capacity of this room is 210 standing or 95 seated.



There are 50+ stacking comfortable chairs available in the hall with a further 40+ in the 'new room'. Twelve large folding tables (seat 8) and a similar number of small tables (seat 4 to 6) are kept in the new room.

New Room

The 'new room' (actually added in the late 1950s!!) is located behind the main hall. Unlike the hall, it is carpeted. The illustration shows the room set out for meetings but chairs can be stacked and tables folded away and stored. The room is c. 30 feet by 20 feet (9m by 6m).

Maximum capacity is 100 standing and 48 seated.



The 'new room' contains an electronic piano which is available for users. There is also a 'toy box' for young children to enjoy under supervision.

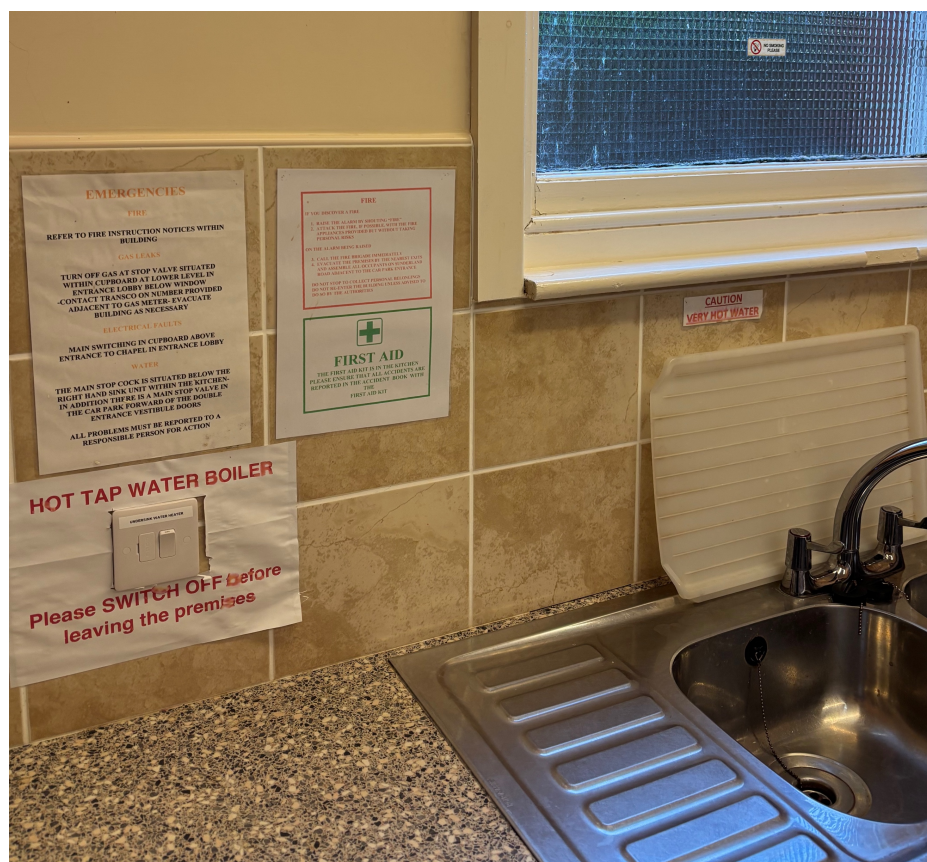
As well as the small folding tables shown in the photographs, the tall cupboards in the 'new room' also store ten large folding tables which are especially useful in the main hall.

Kitchen

Users of the premises have access to the kitchen which is located along the corridor from the hall and the 'new room'. There is a serving hatch directly into the hall. The kitchen has a double sink unit and a single sink unit. Equipment includes a fridge, oven, microwave, and a large standalone water boiler for large events, plus kettles. Cups & saucers, plates and trays etc are stored in the cupboards and the unit drawers as illustrated.



HOT WATER for Kitchen TAPS



The hot water supply to the kitchen sink taps, for washing up etc. is switched on/off at the switch to the left side of the window.
Please remember to switch it off before you leave.

BOILING WATER



For most events boiling water is more easily obtained by using the electric kettles but **if you need to boil large quantities of water** e.g. for a Coffee Morning or similar event, there is a large capacity plumbed-in water boiler situated in the left corner of the Kitchen. You are welcome to use this but

YOU MUST follow the safely instructions carefully otherwise boiling water can pour out onto the floor.

The water boiler is plumbed into the water supply. The power supply switch is located on the wall at the side of the boiler.

- Switch on – a red edge mark will show on the switch.
- The boiler fills automatically.
- Water heats to boiling point within about 15 minutes.
- As you use the boiling water it will refill automatically.
- **WHEN FINISHED you MUST:**
- Turn off the power switch.
- Then carefully EMPTY the boiler completely.

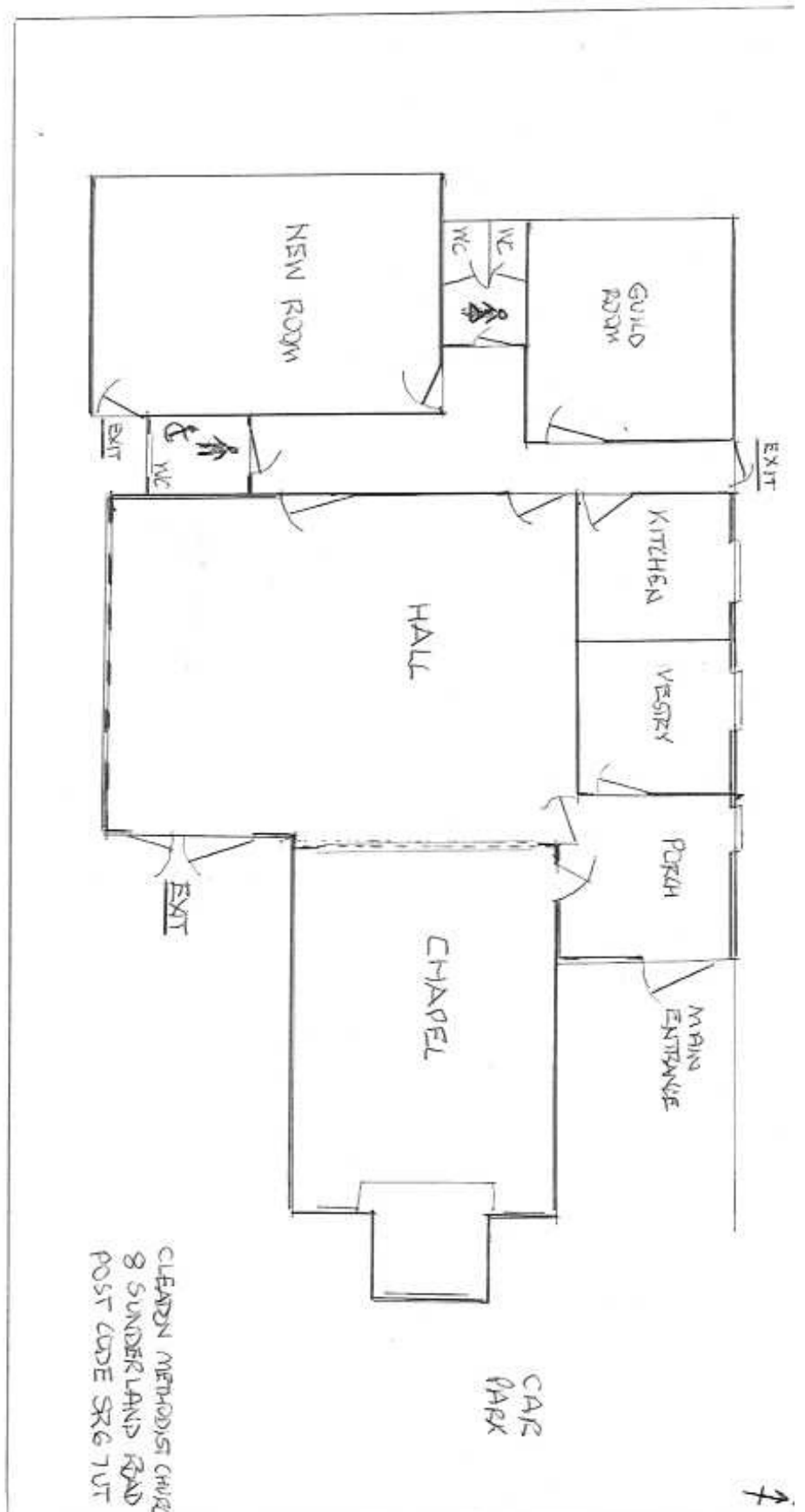
Failure to turn-off and fully empty the boiler can cause a flood and you may be charged for any remedial work required – the last time it happened we had to replace a cupboard door damaged by the boiling water.

Car Park

The church has its own car park. There is also a concrete standing adjacent to the side entrance to the hall. There are double doors which are especially useful when large vans are used to transport equipment to be used in the hall.



Layout of Premises



Entrance Lobby

The entrance porch and all public rooms in the premises are easily accessible for wheelchair users, including an accessible toilet.

The Chapel has a hearing 'loop' system.



ALL ARE WELCOME

Cleadon Methodist Church is not just a place of worship. As Methodists we are part of the community in Cleadon and we welcome others to enjoy our facilities and to use the premises for entertainment, education, music and enjoyment. We aim to help build a safe, cohesive and friendly community. We therefore welcome those of all faiths and none, without prejudice or discrimination.

Bookings can be made by telephoning 07889177092.